



## ORCA プロジェクト 定点調査研究事業

### フィードバック資料

### 主要 3 要素および 3 指標の件数分布

2009 年 8 月 4 日



---

---

## 目 次

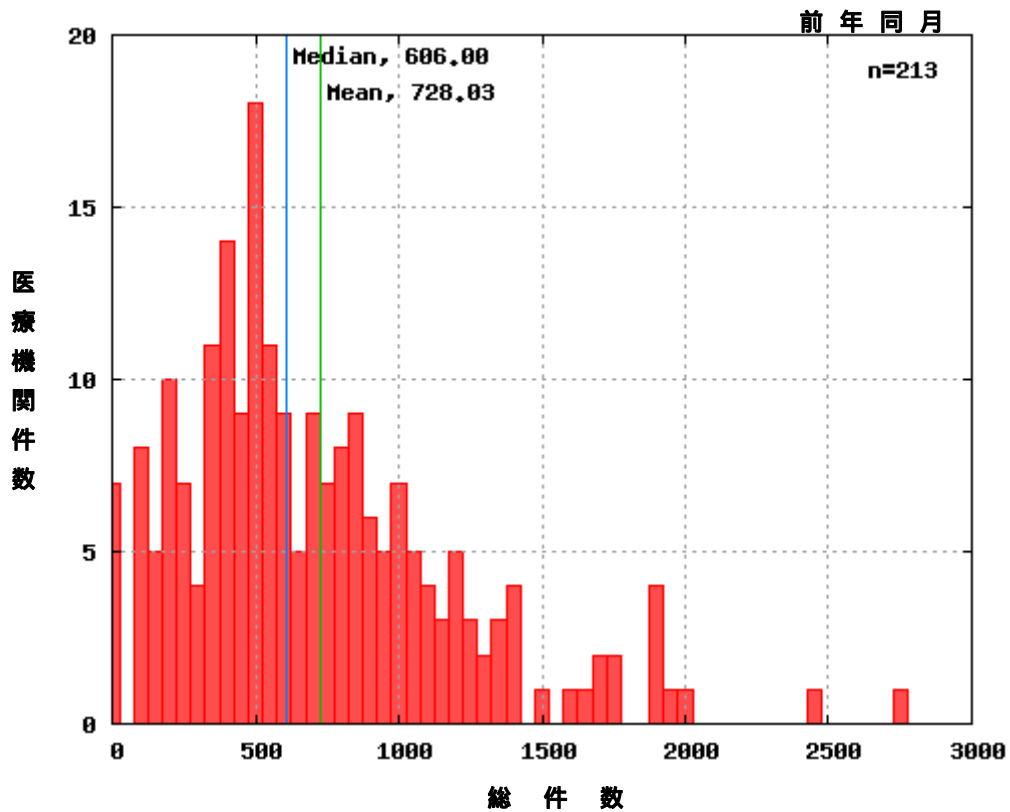
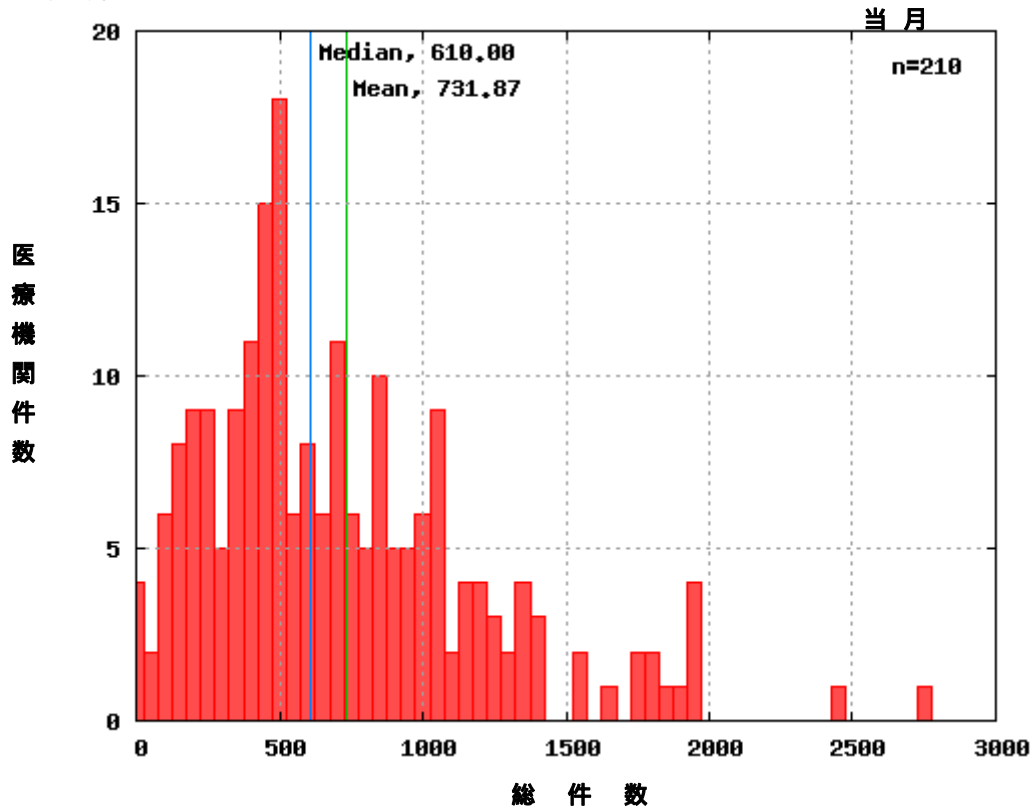
1. 主要 3 要素.....	1
1.1. 総件数.....	1
1.2. 総点数.....	4
1.3. 総実日数.....	7
2. 経営統計.....	10
2.1. 患者当たり点数.....	10
2.2. 平均通院回数.....	13
2.3. 1 日あたり点数.....	16
2.4. 初診料算定回数.....	19



## 1. 主要3要素

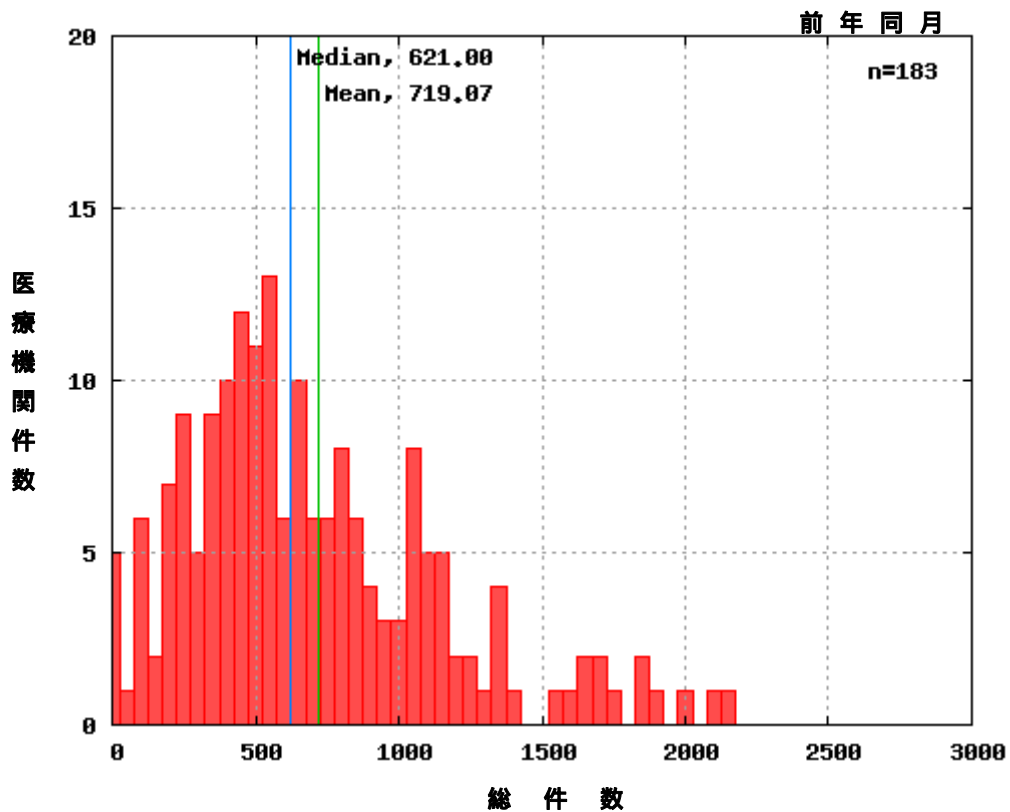
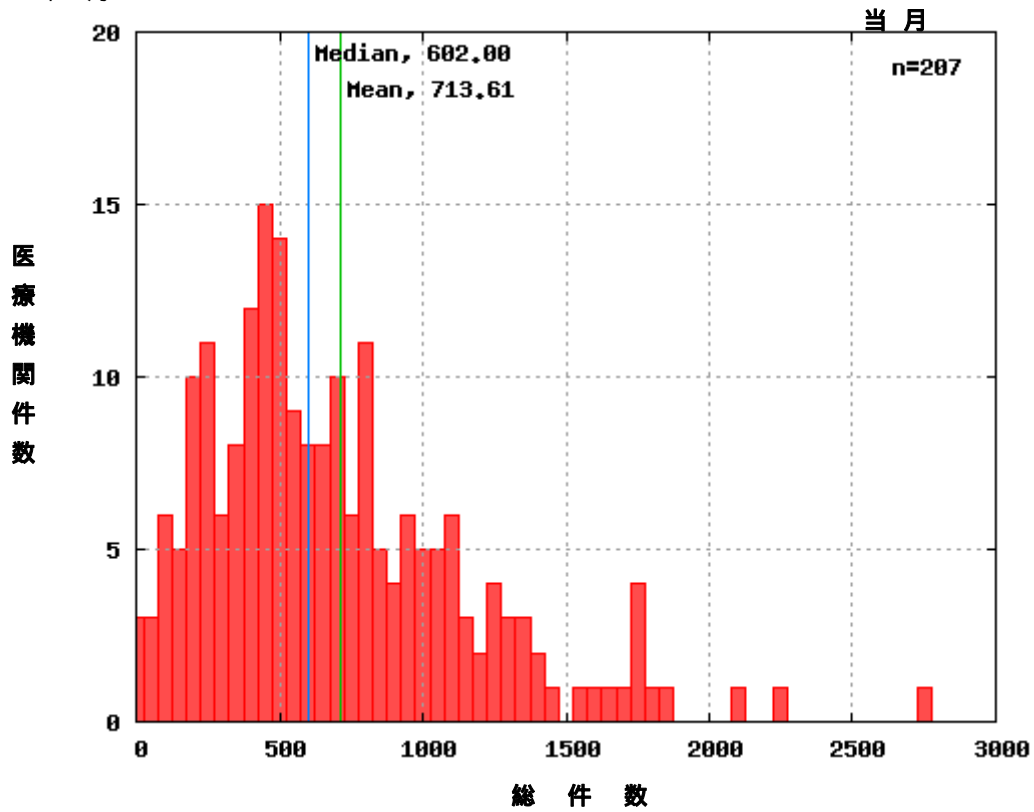
### 1.1. 総件数

(1) 2009年4月



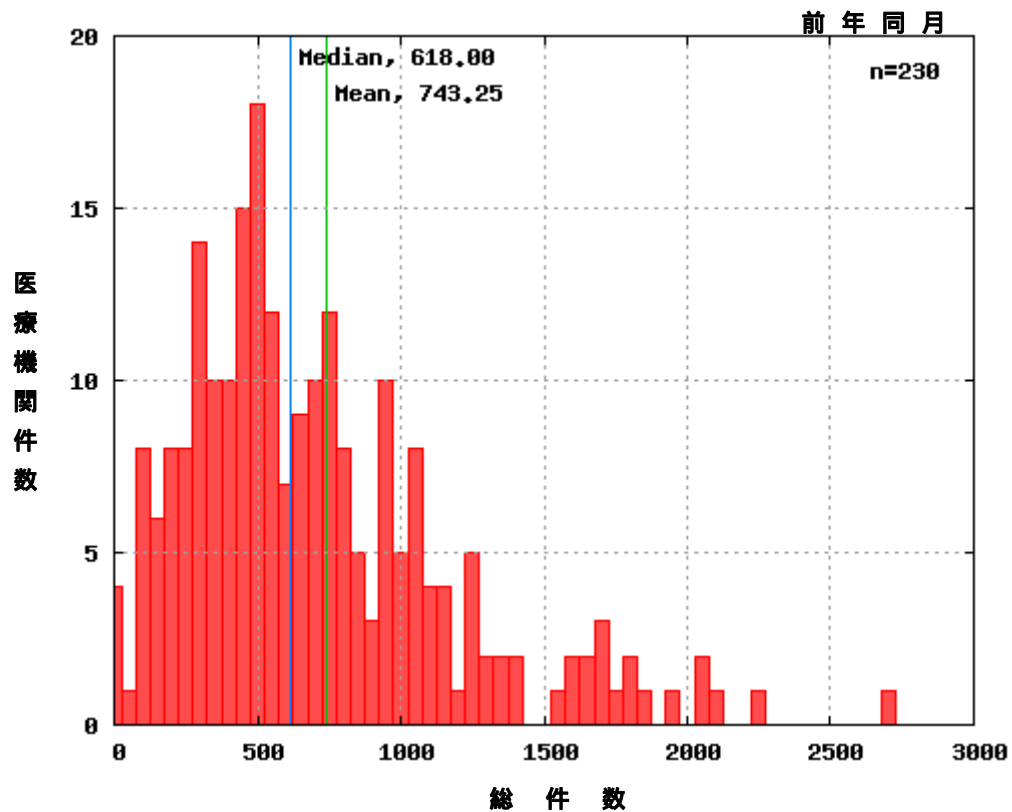
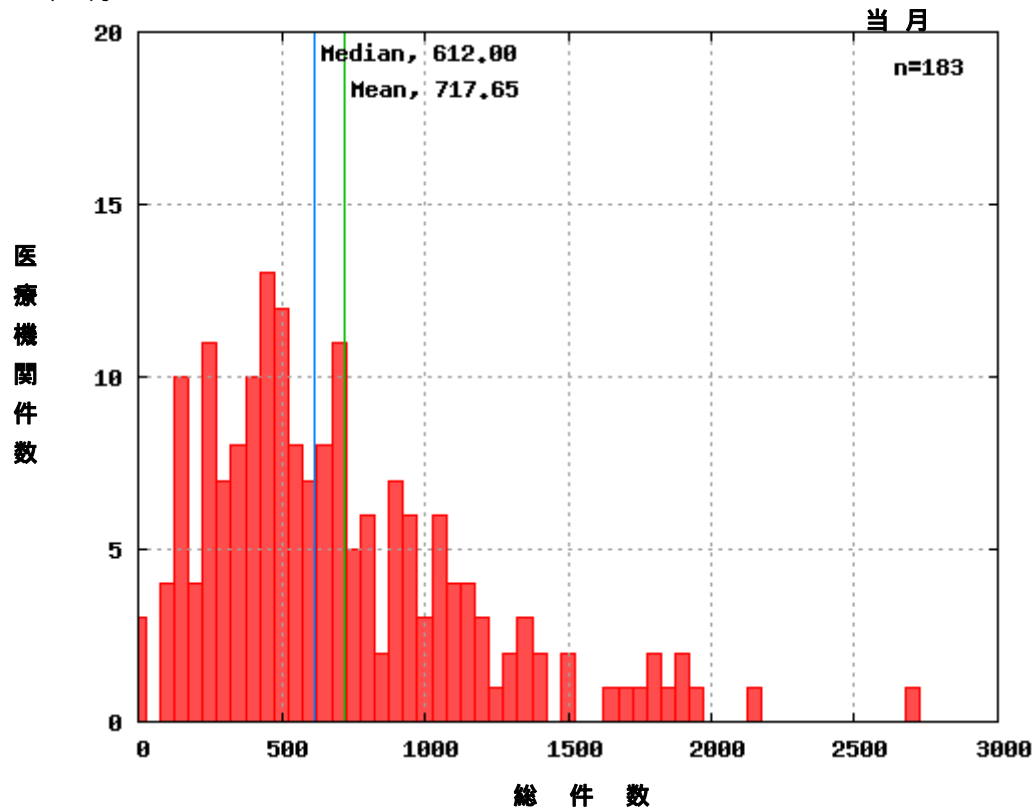


(2) 2009年5月





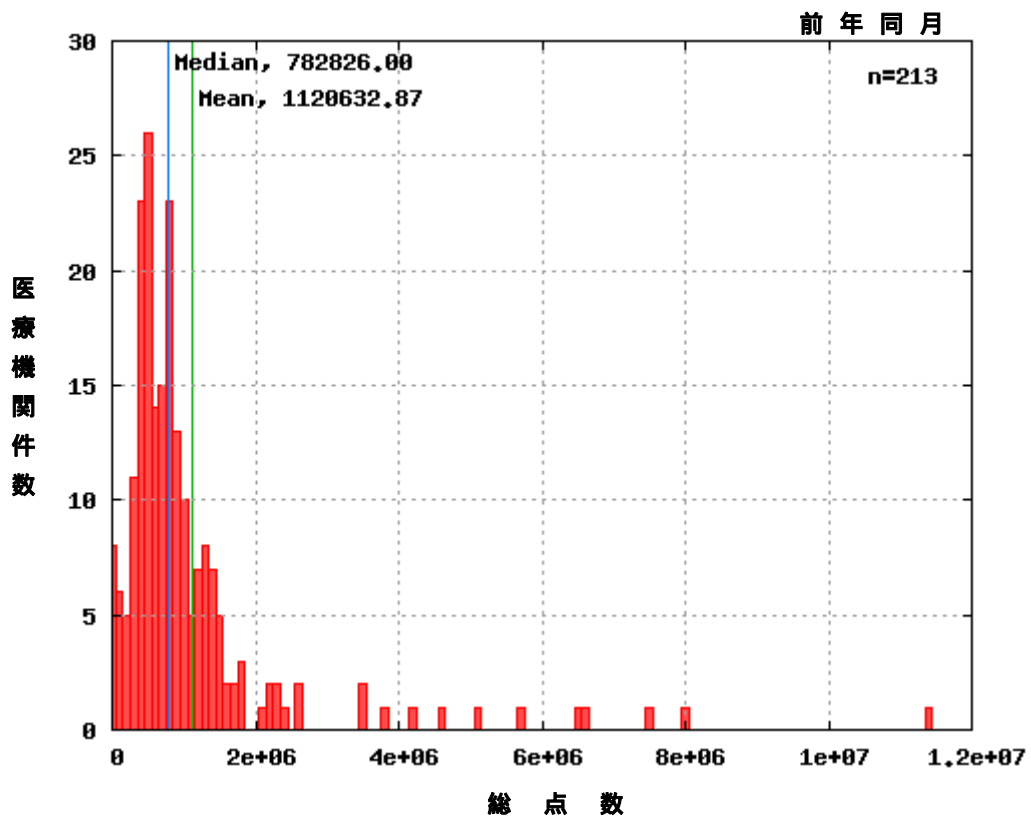
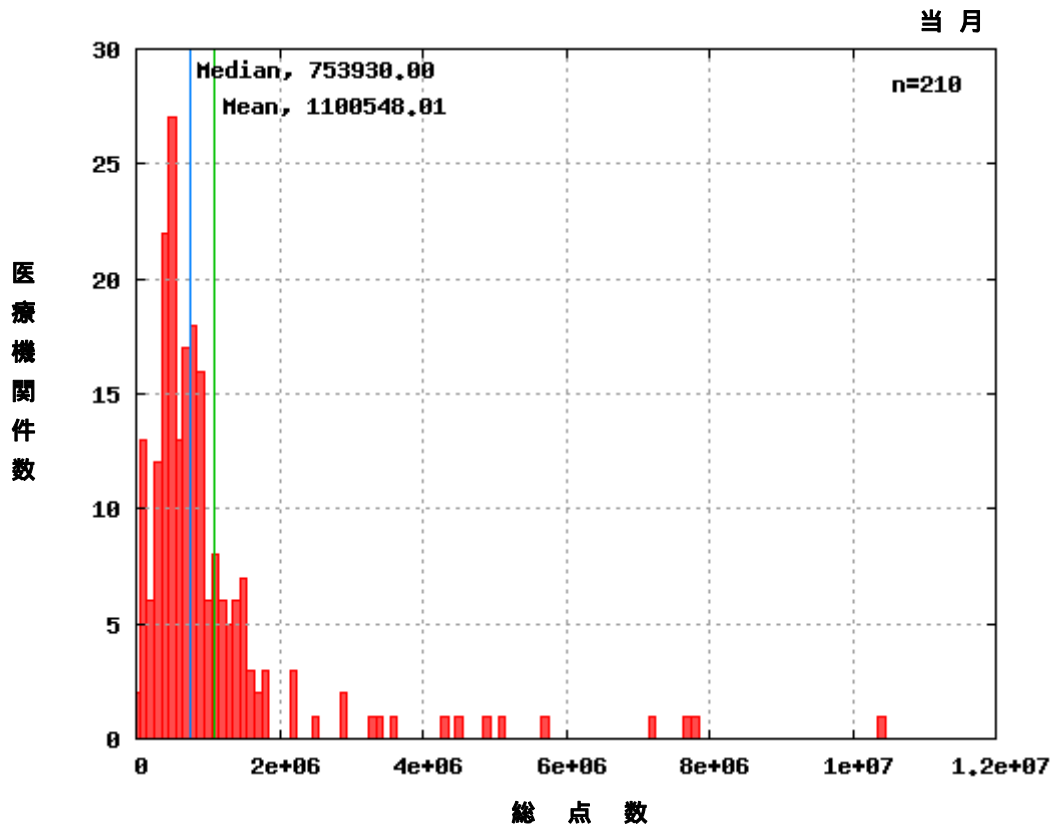
(3) 2009年6月





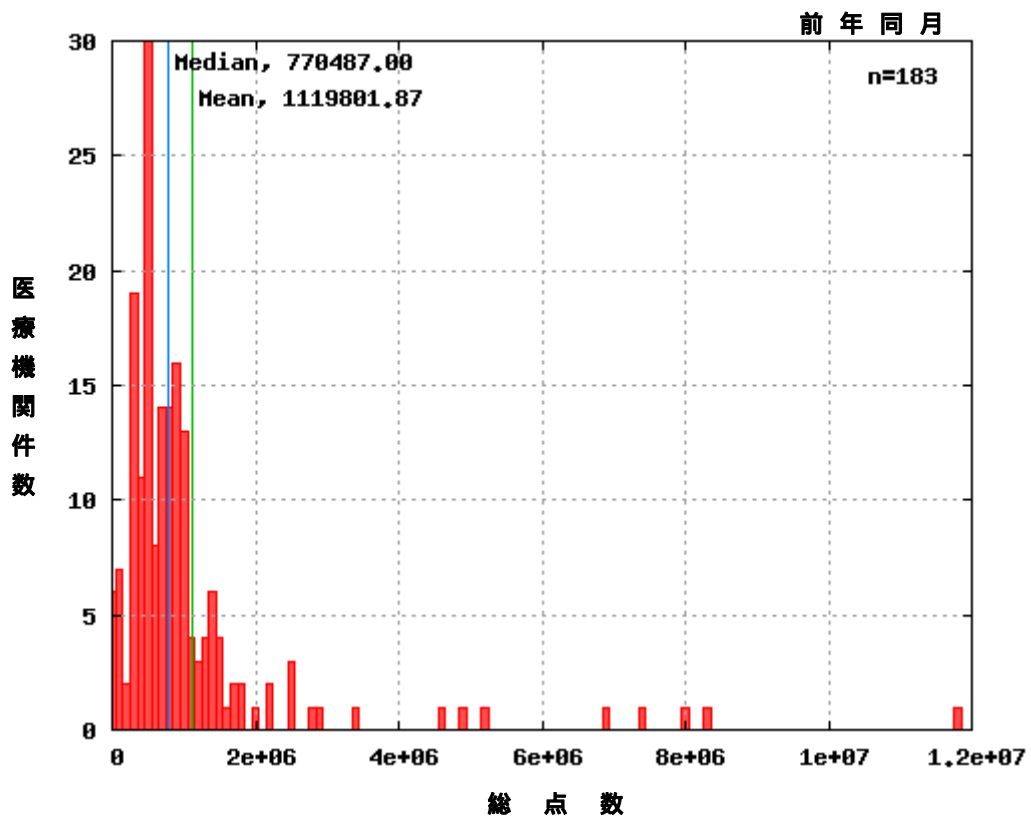
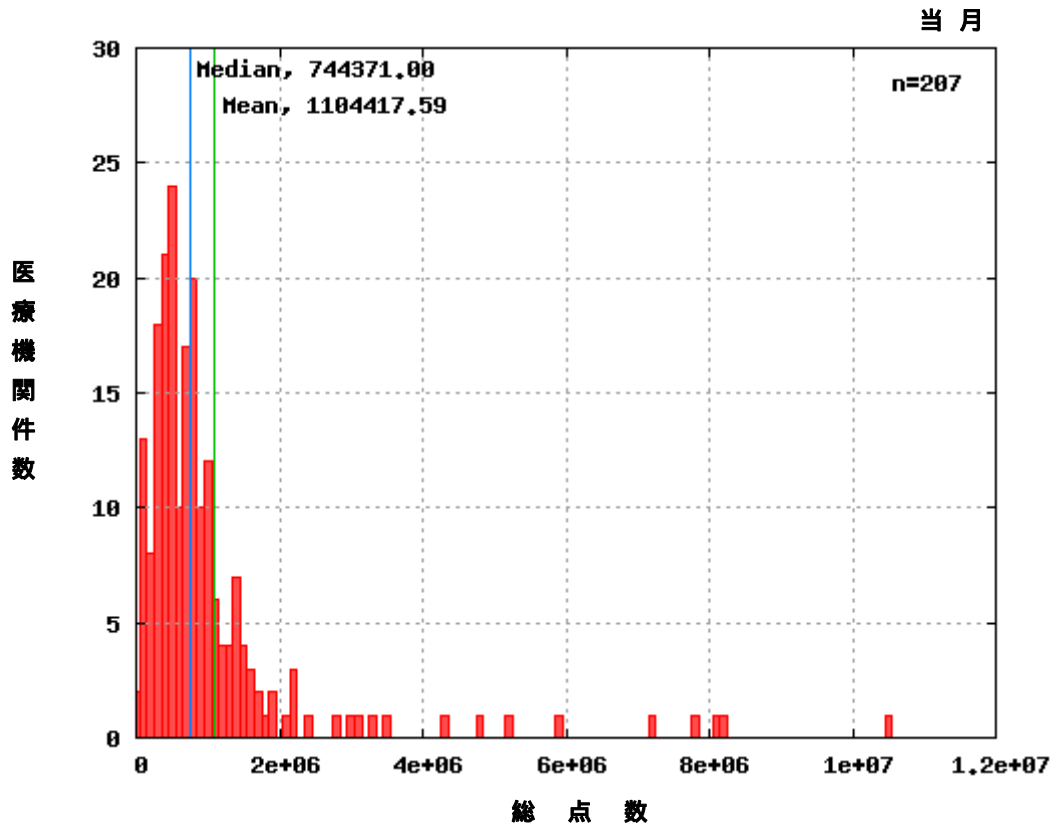
## 1.2. 総点数

(1) 2009年4月



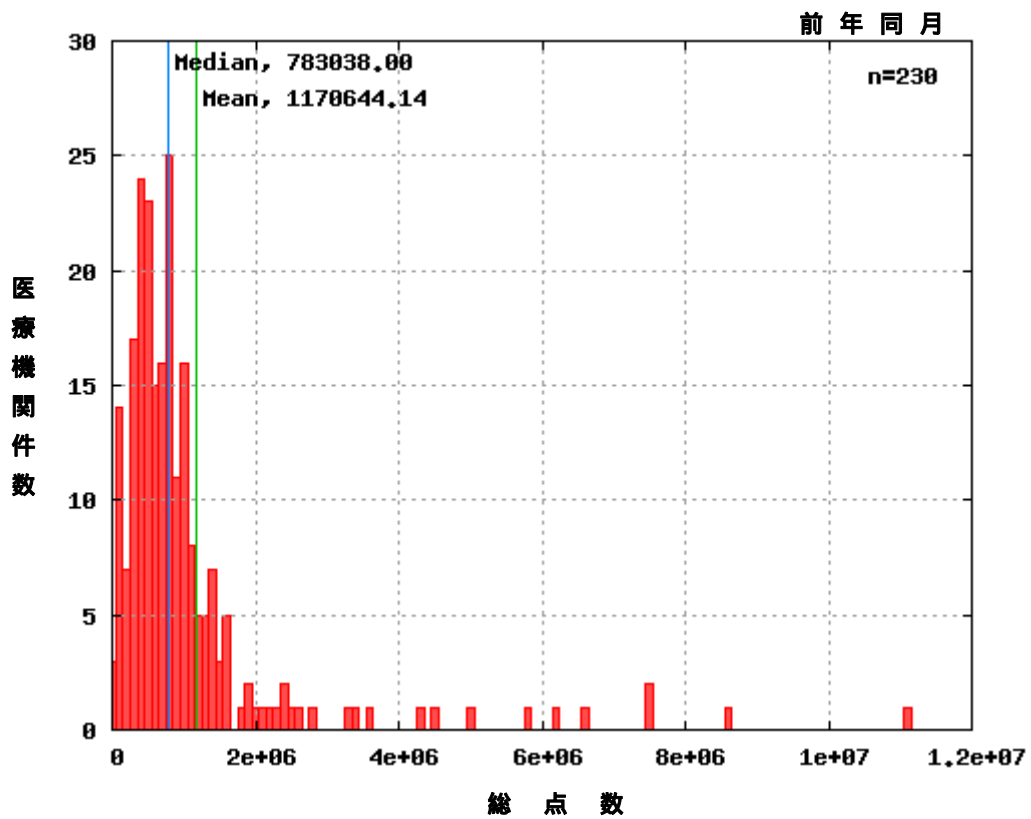
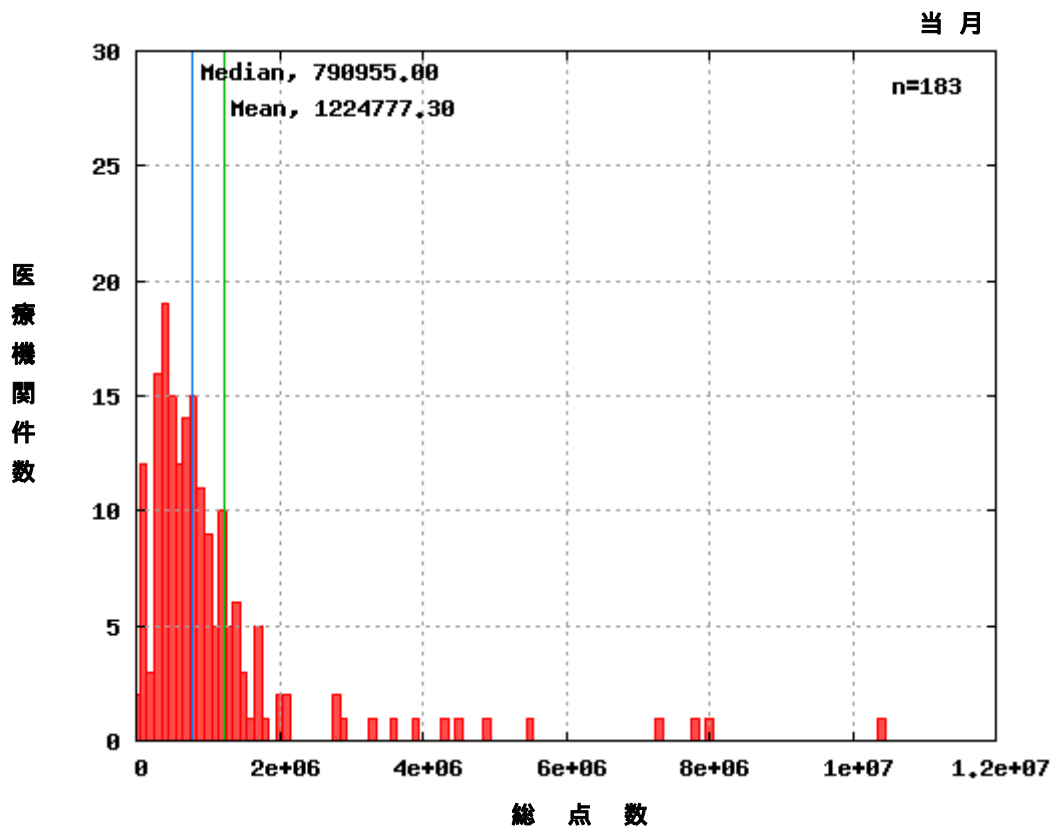


(2) 2009年5月





(3) 2009年6月

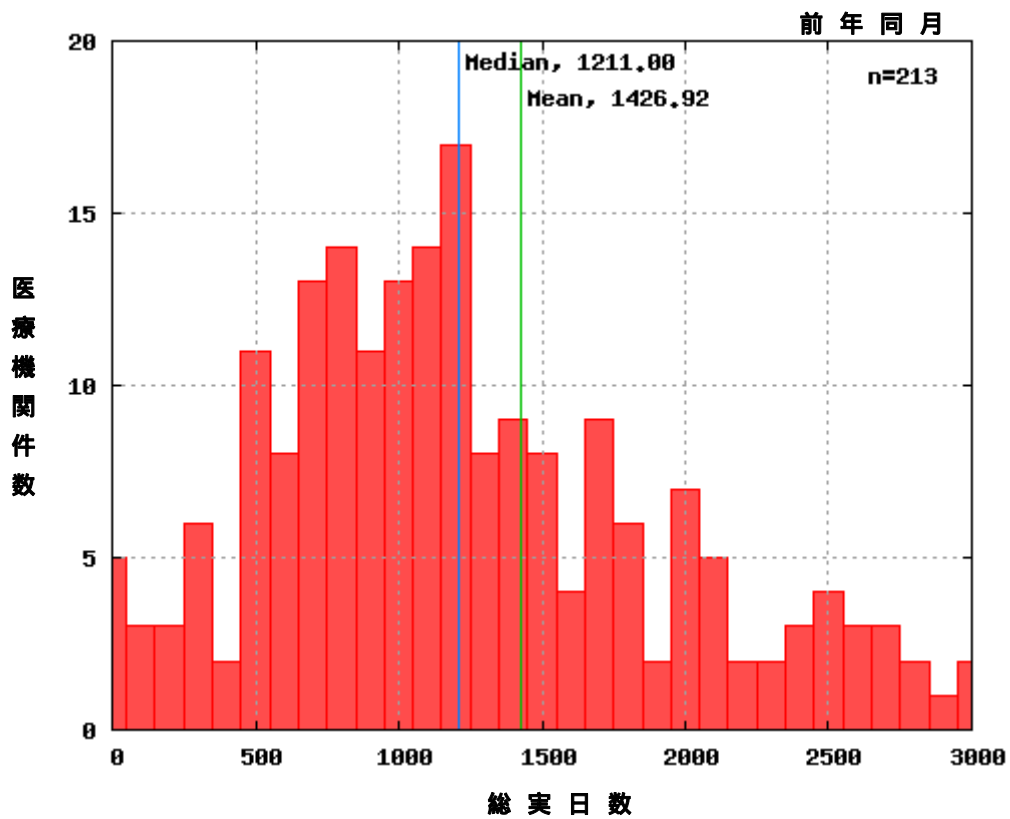
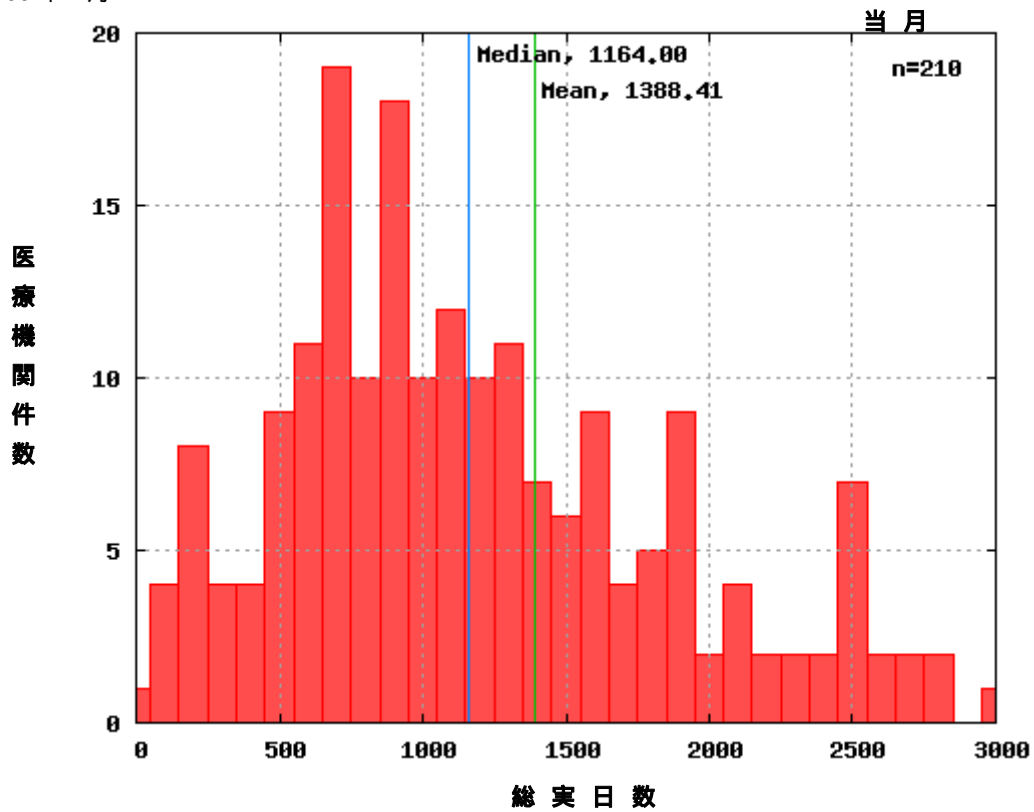






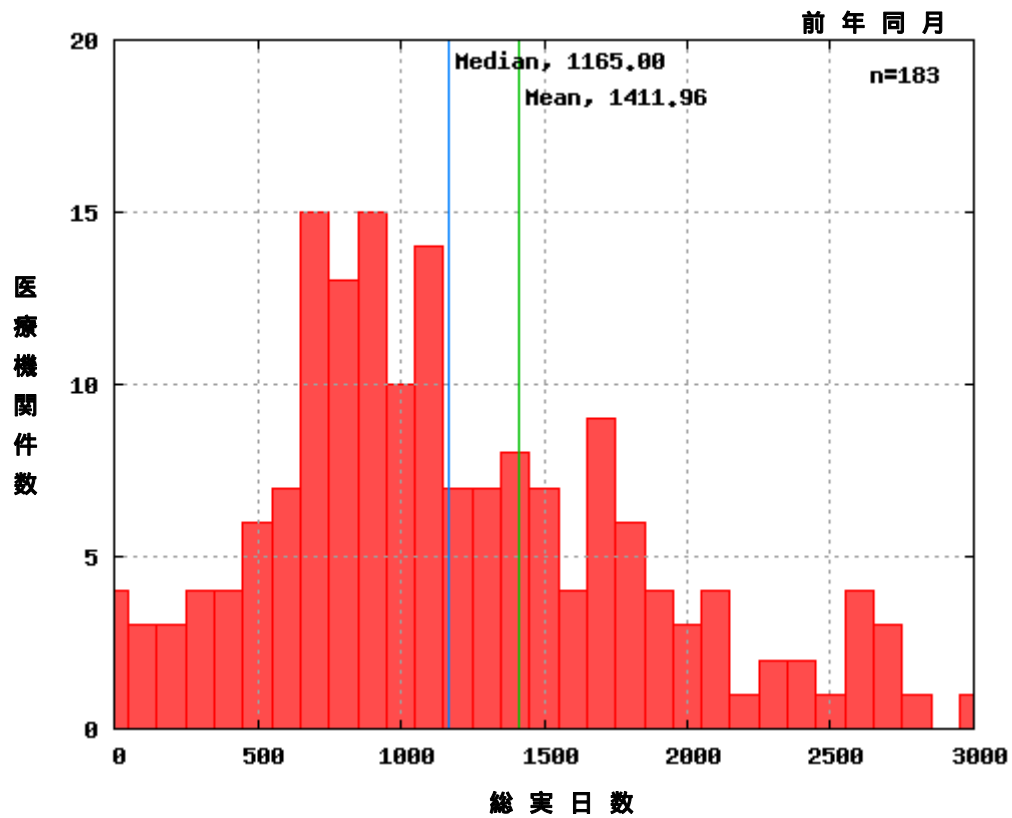
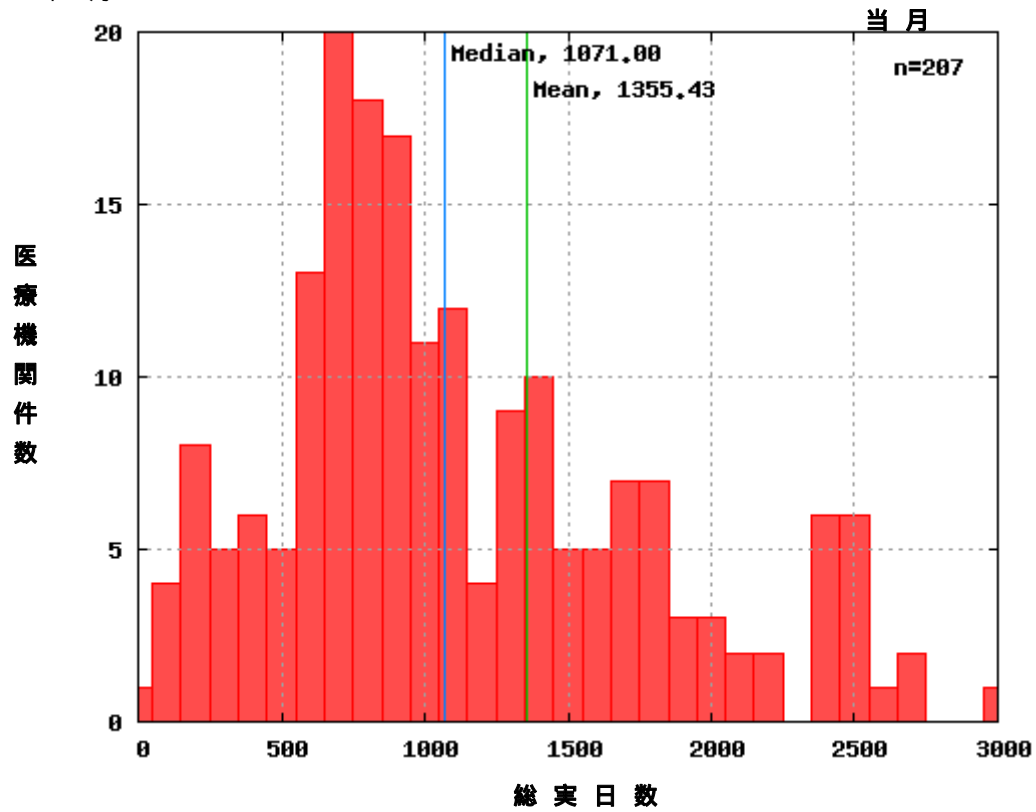
### 1.3. 総実日数

(1) 2009年4月



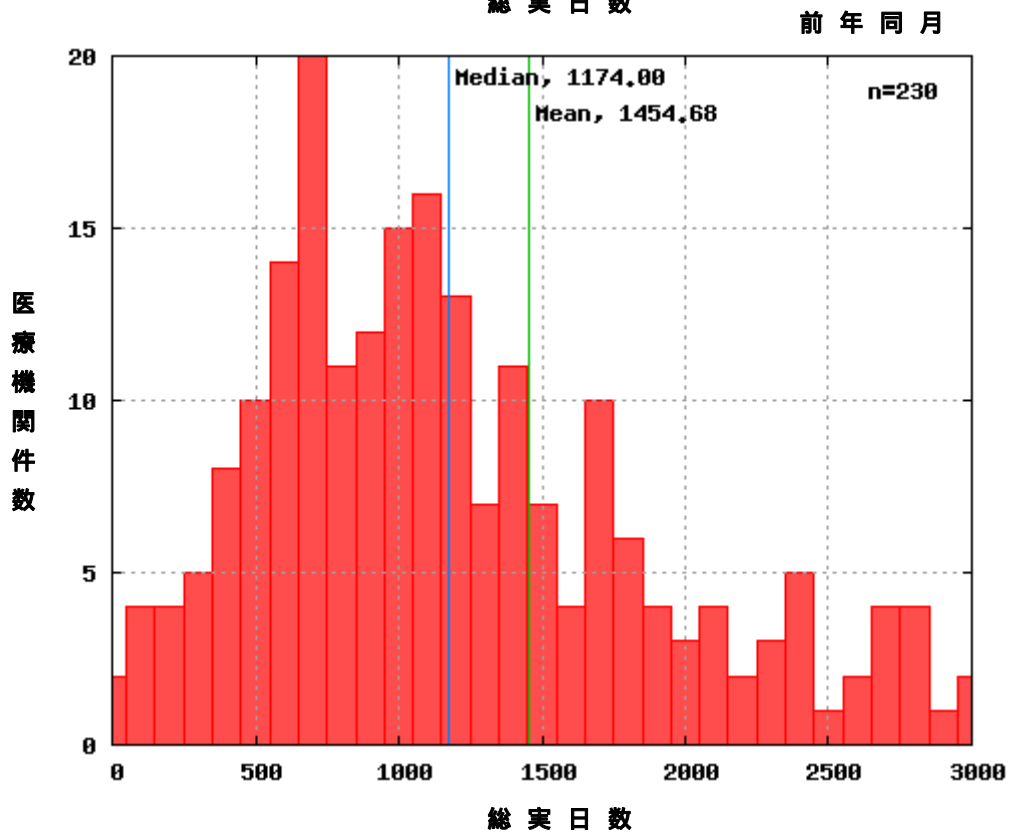
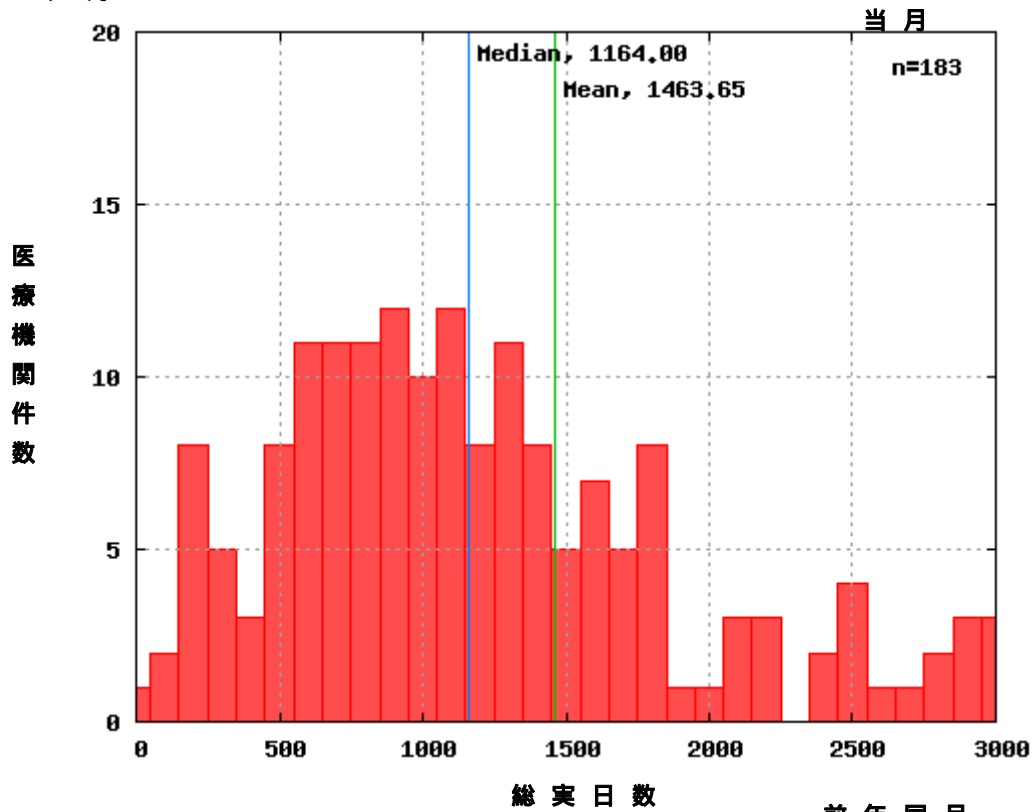


(2) 2009年5月





(3) 2009年6月

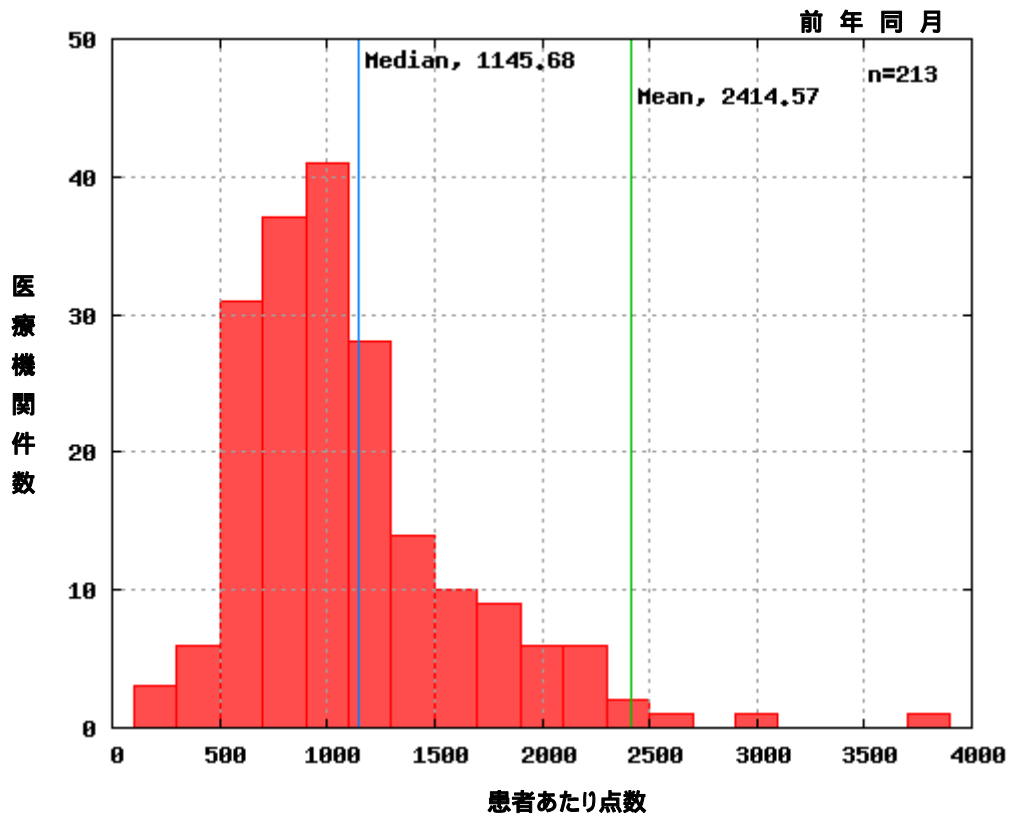
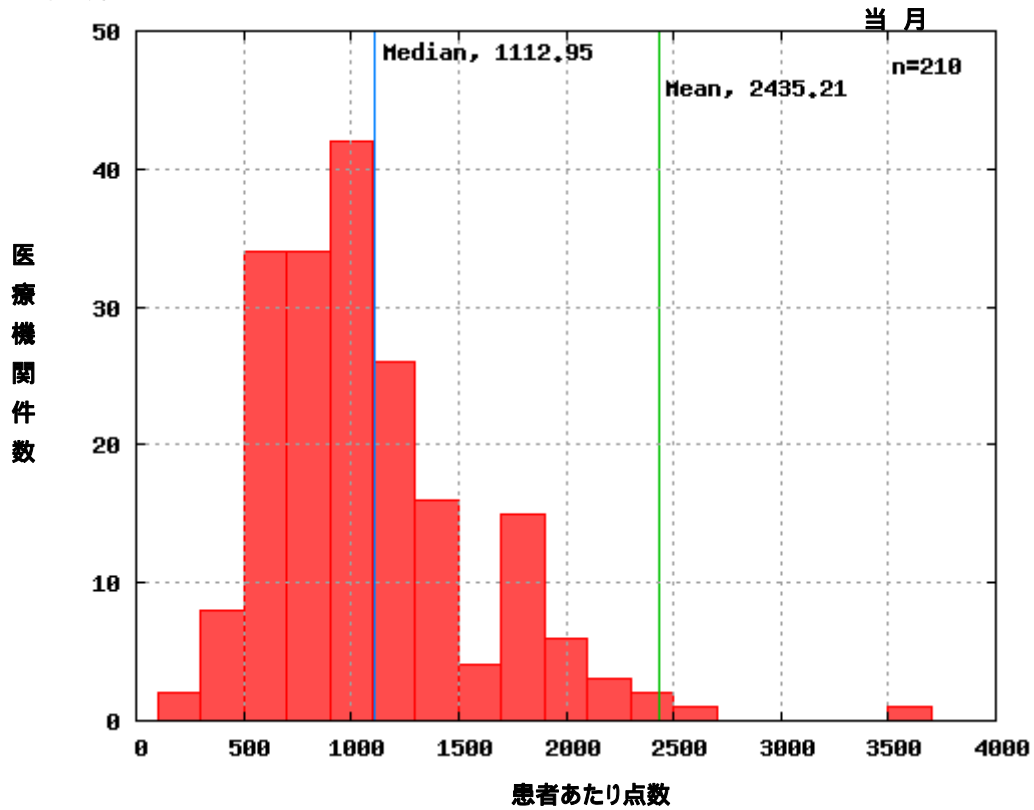




## 2. 経営統計

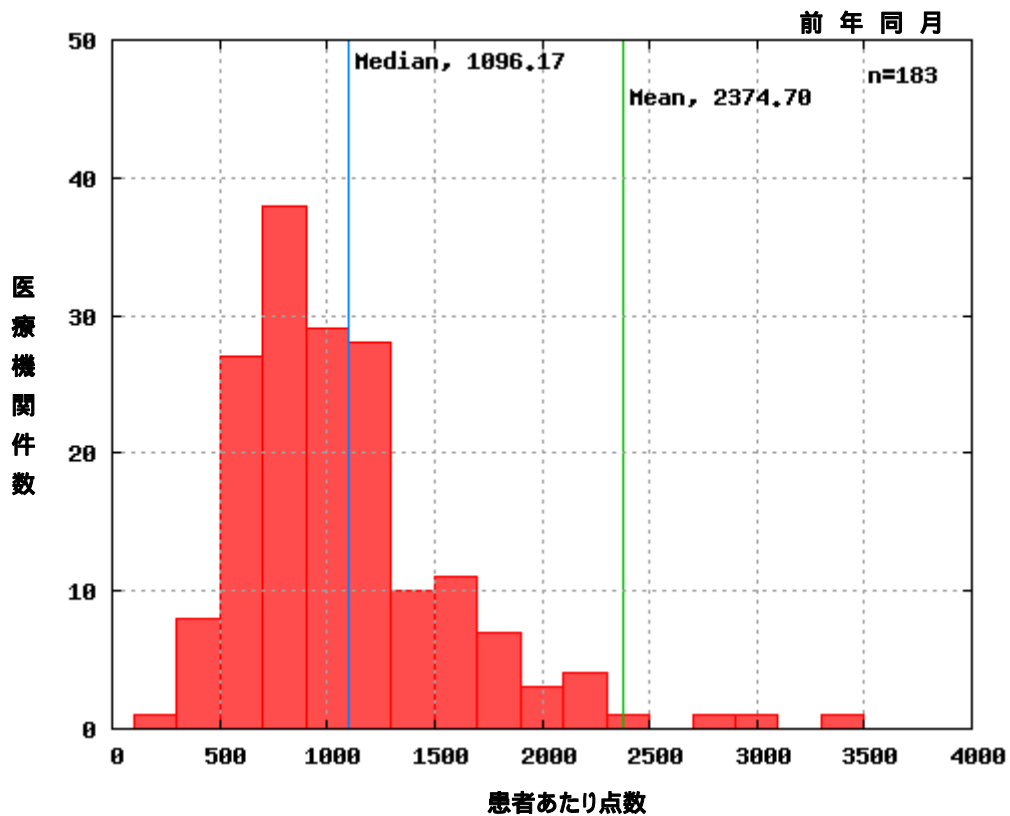
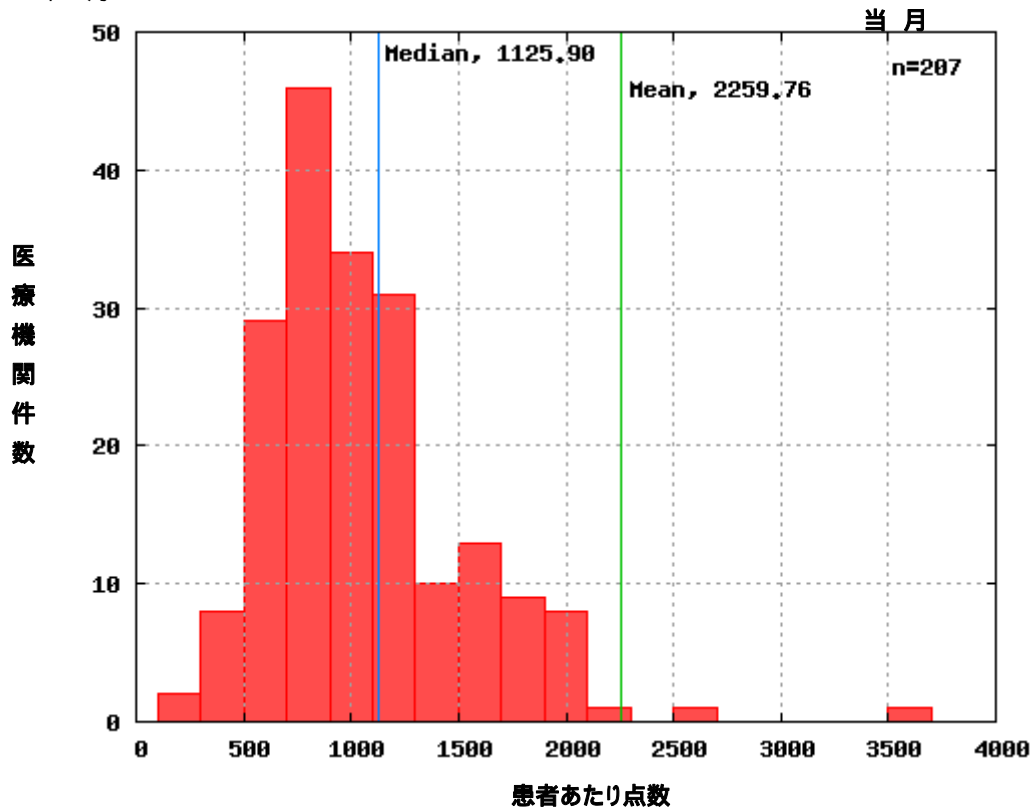
### 2.1. 患者当たり点数

(1) 2009年4月



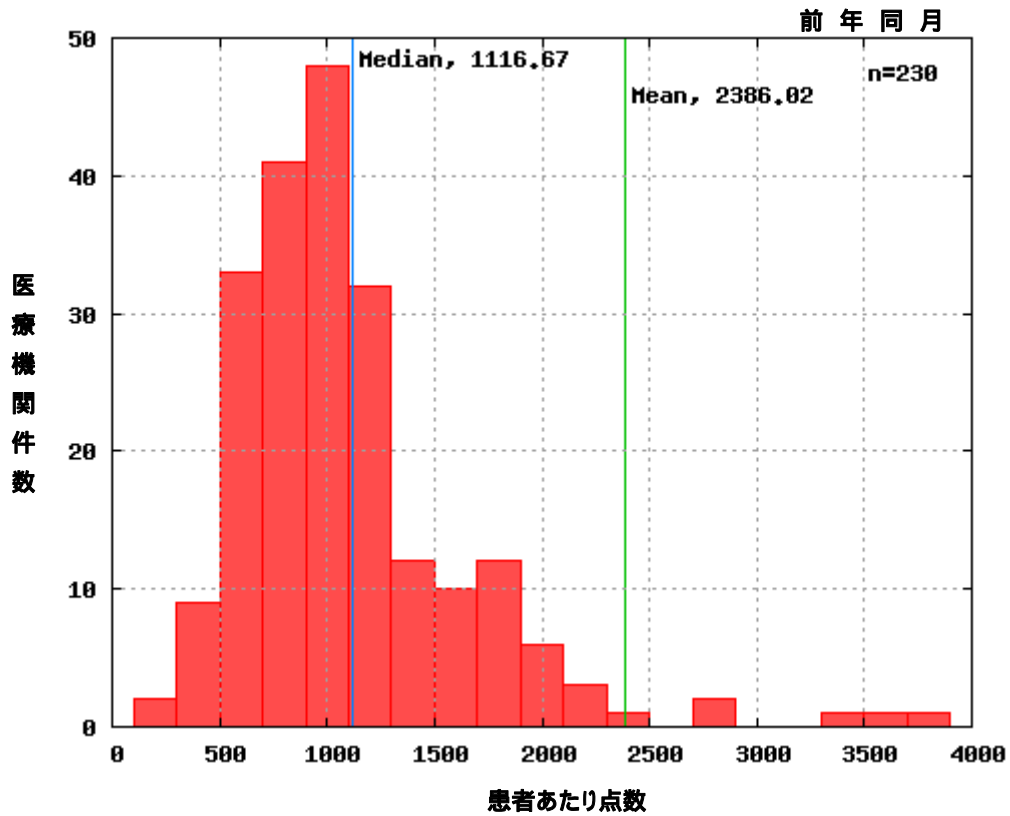
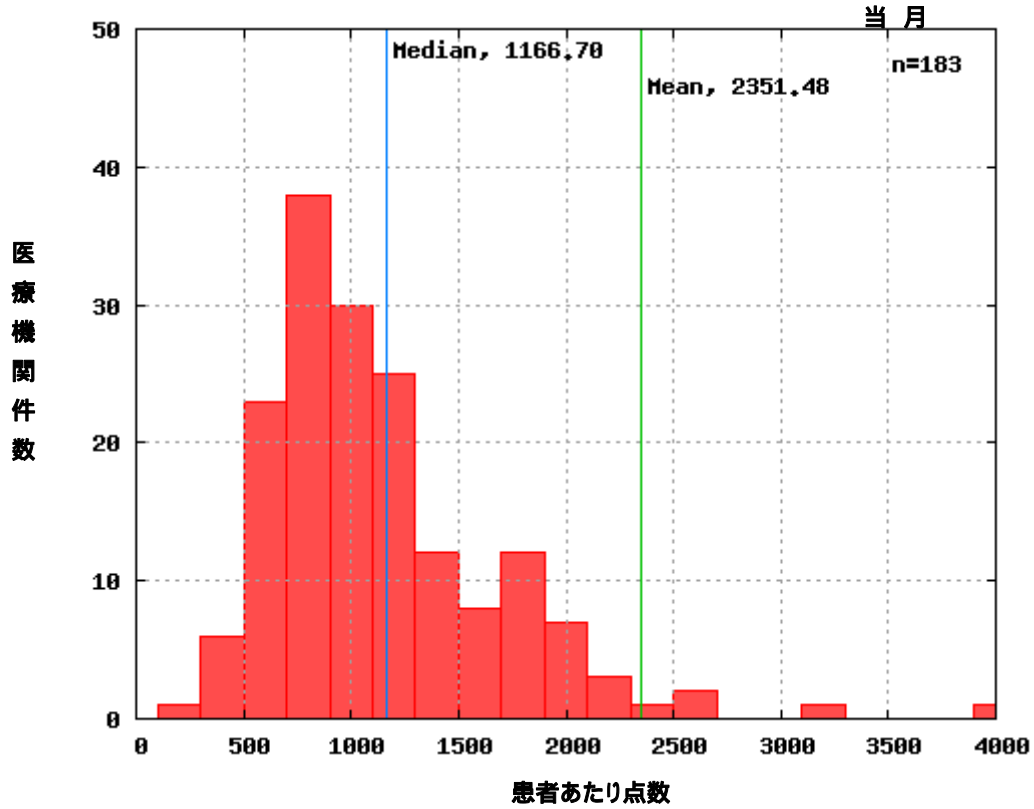


(2) 2009年5月





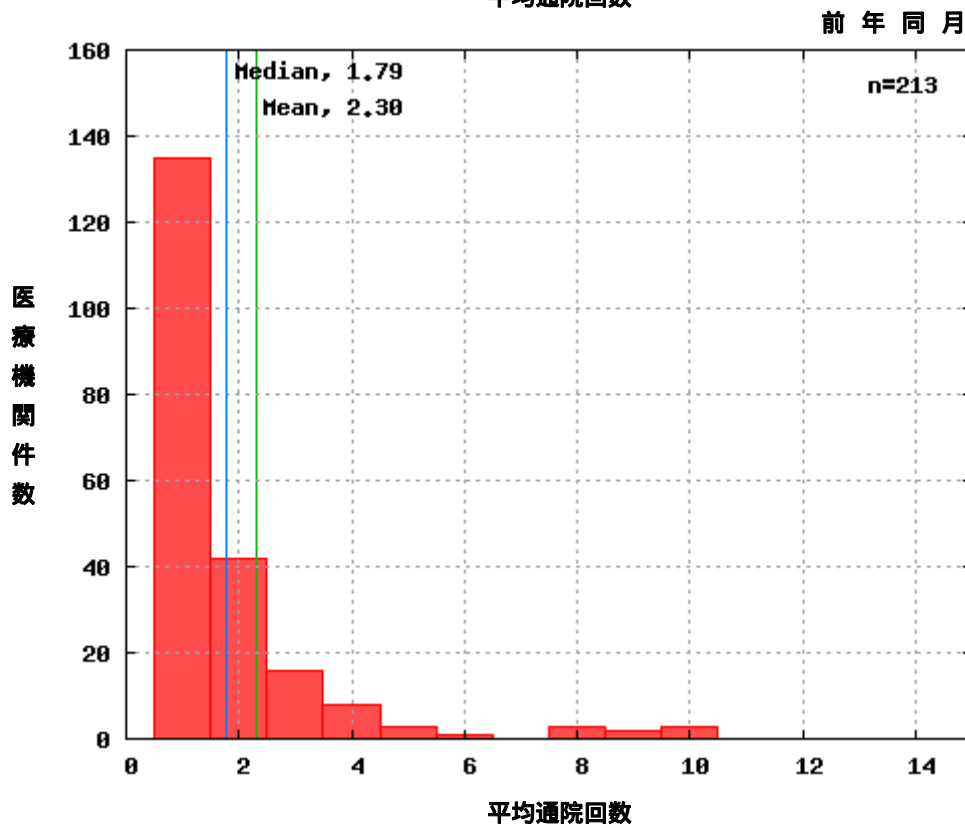
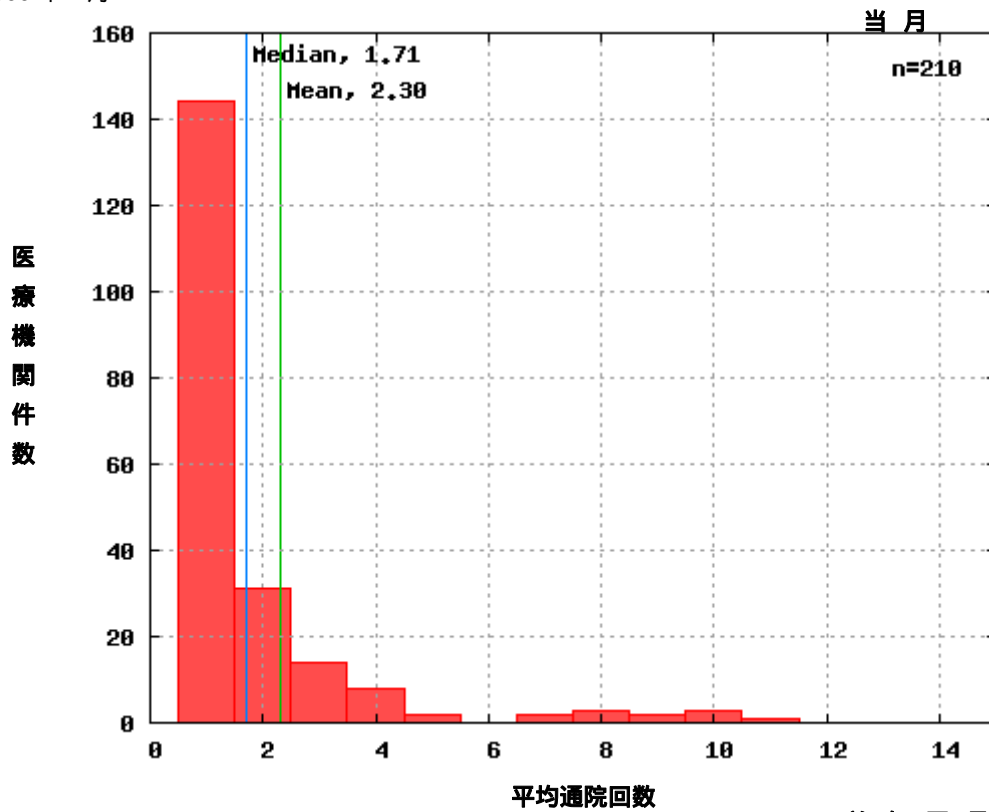
(3) 2009年6月





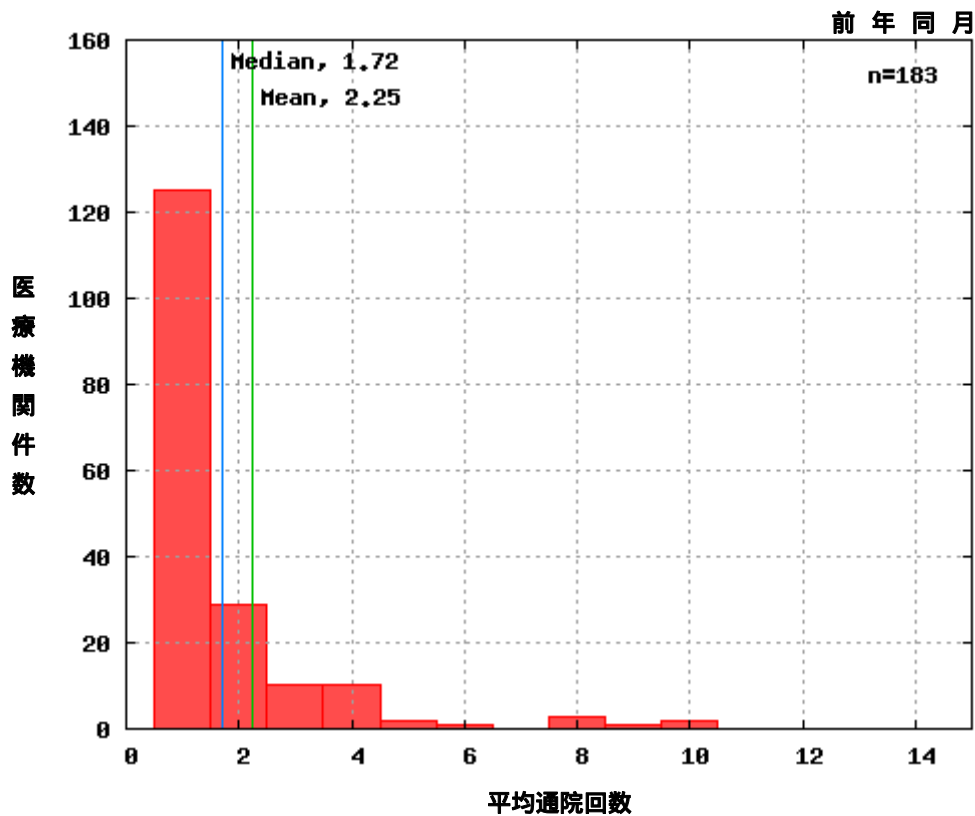
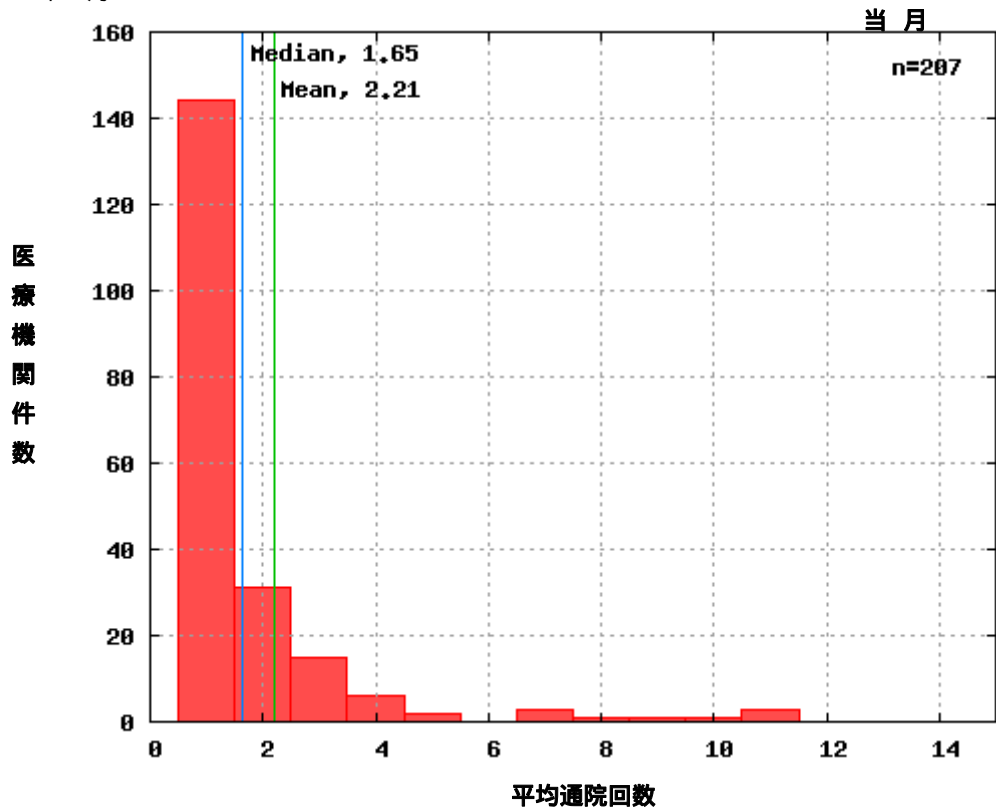
## 2.2. 平均通院回数

(1) 2009年4月





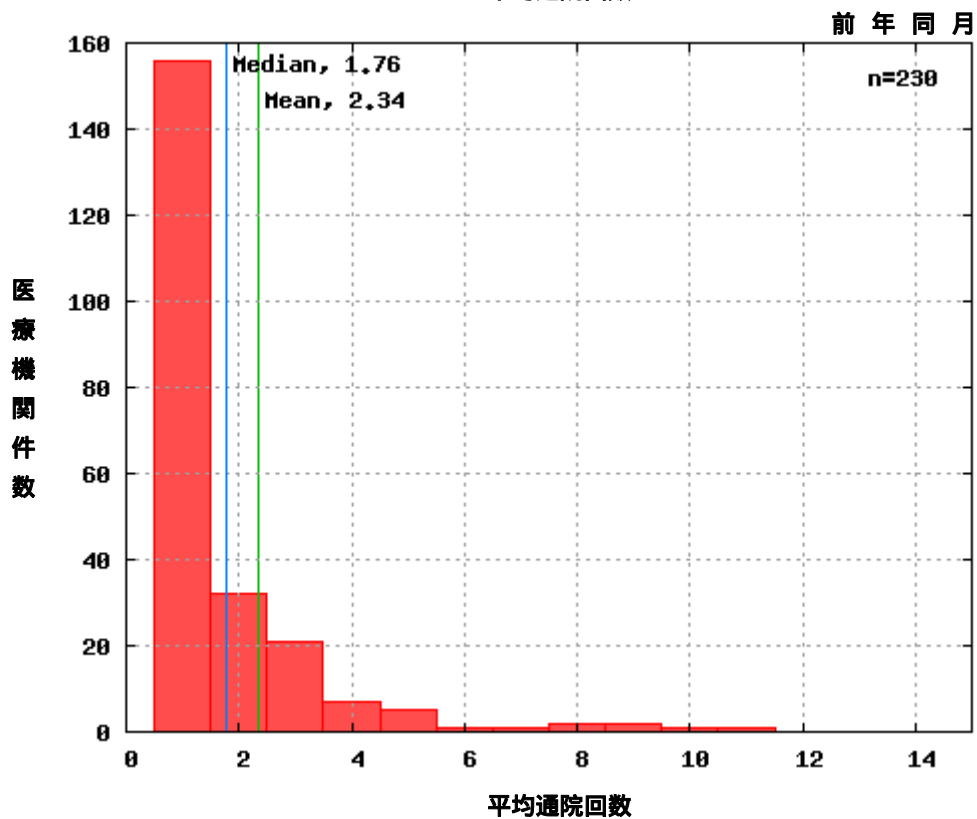
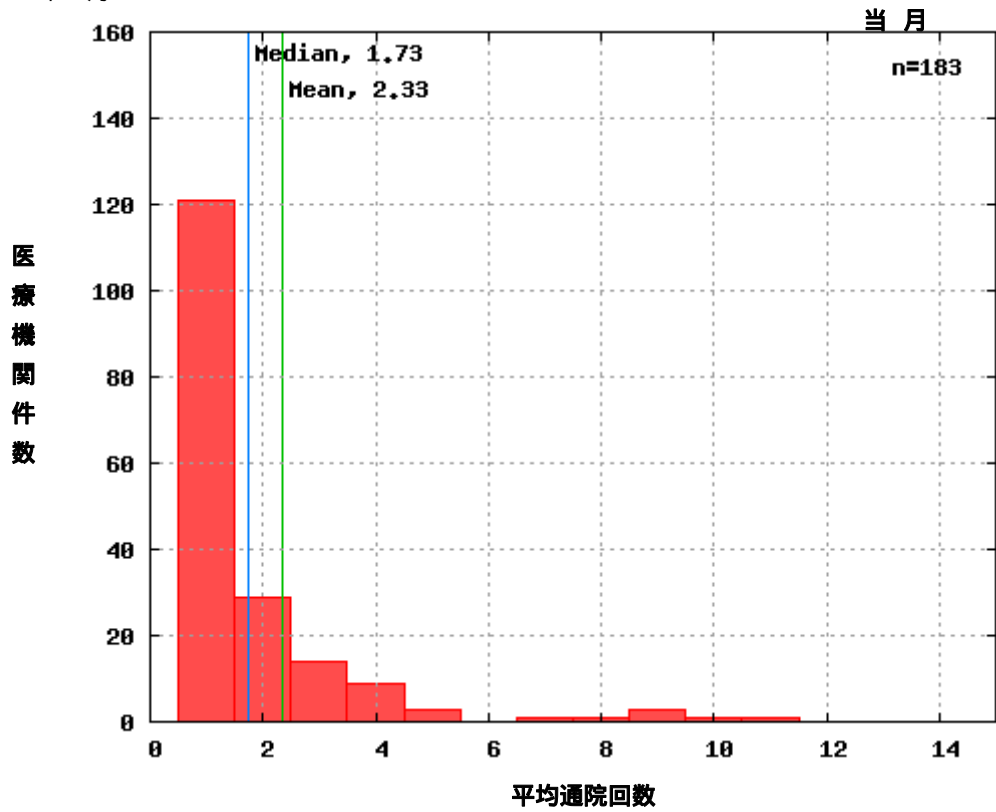
(2) 2009 年 5 月







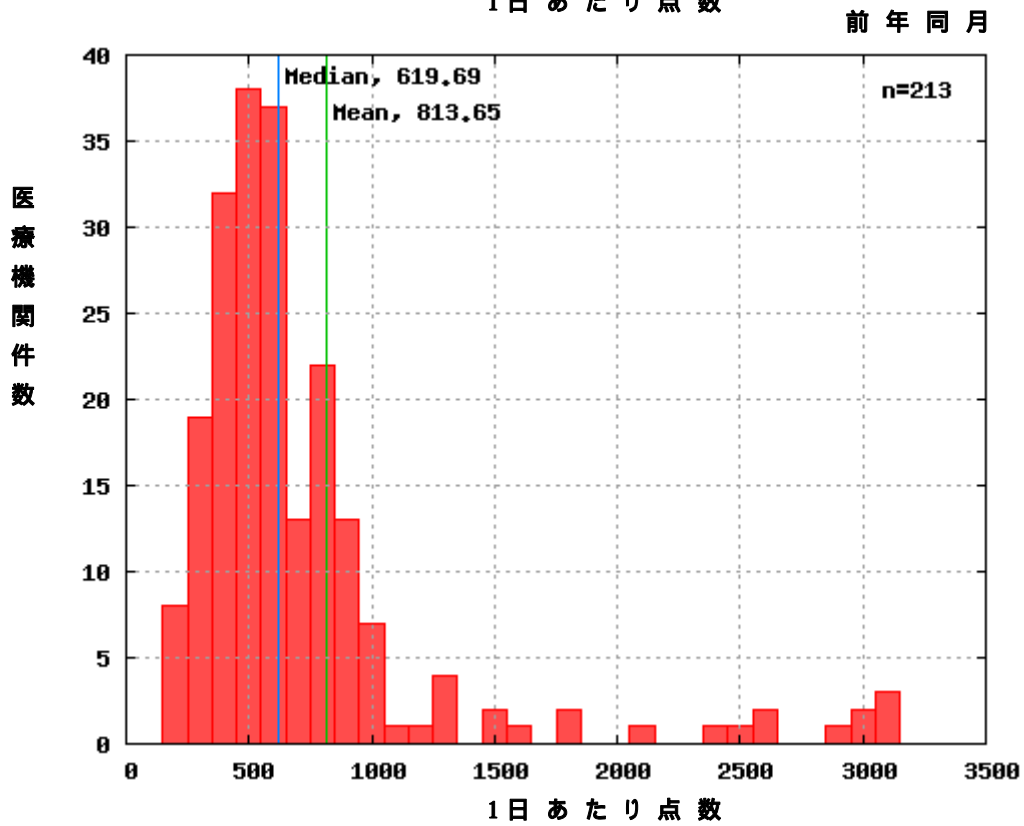
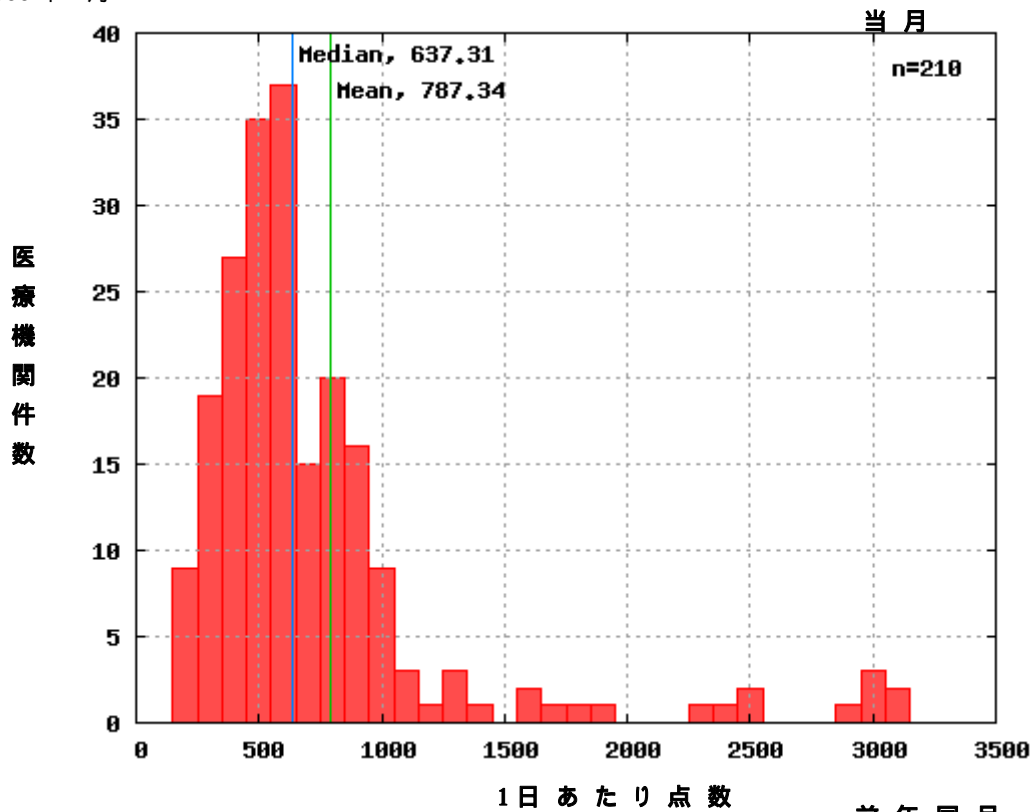
(3) 2009年6月





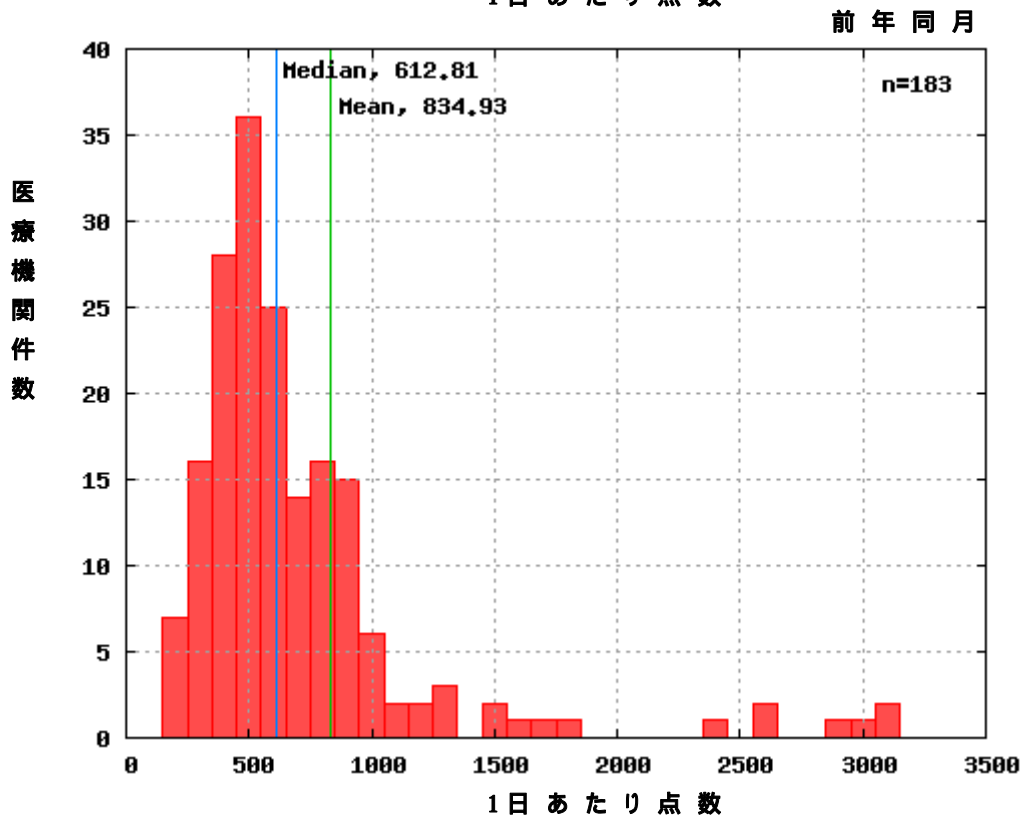
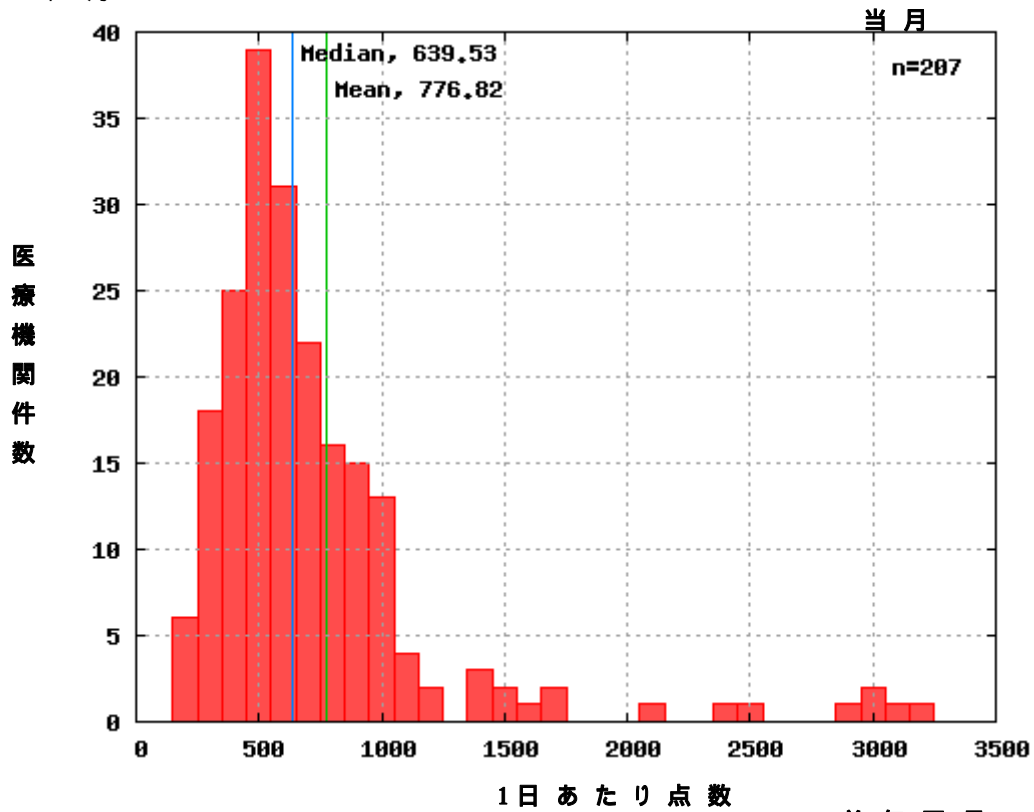
2.3. 1日あたり点数

(1) 2009年4月



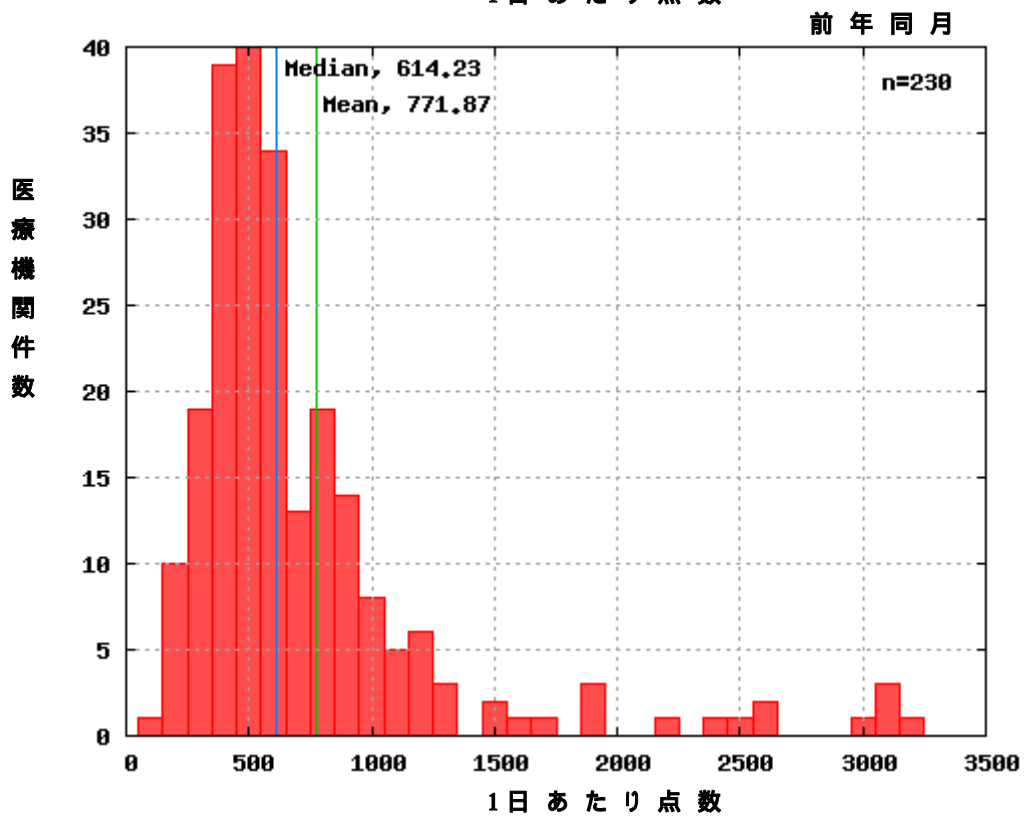
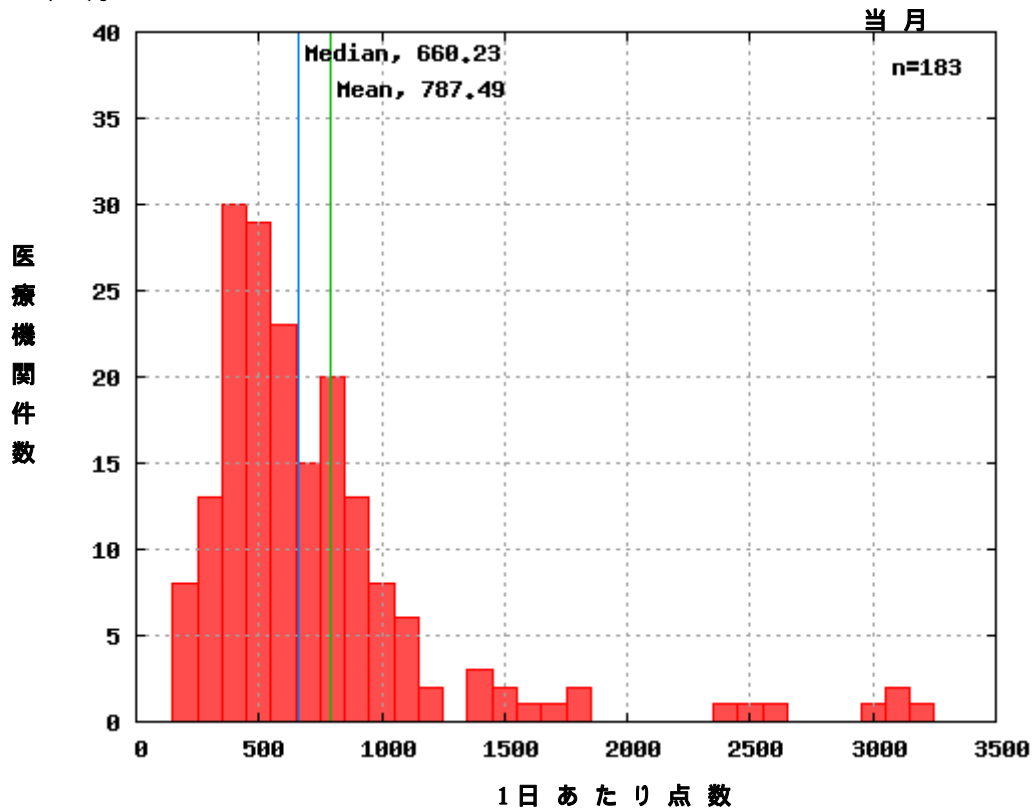


(2) 2009年5月





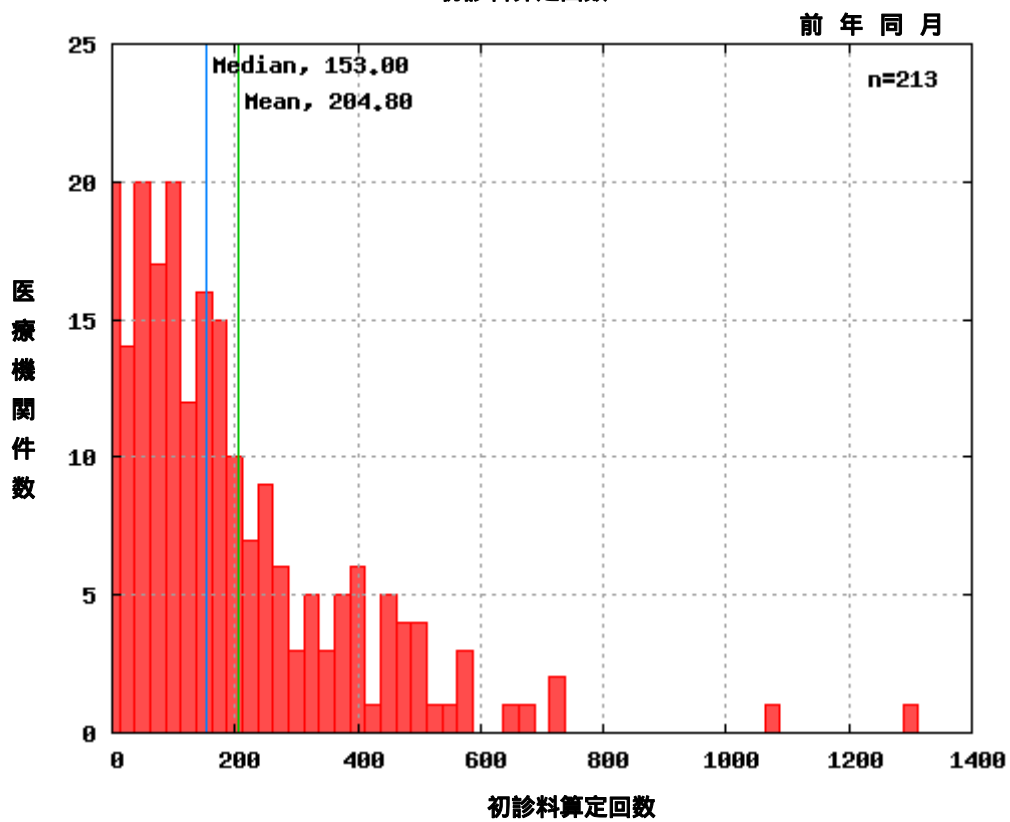
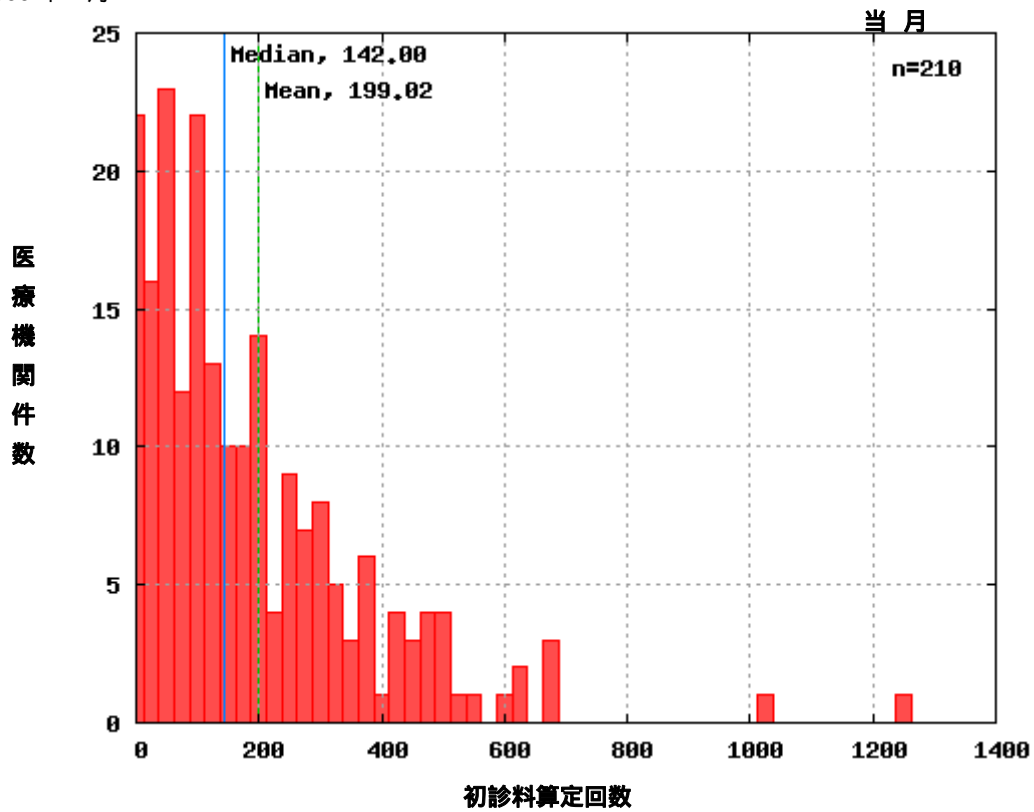
(3) 2009年6月





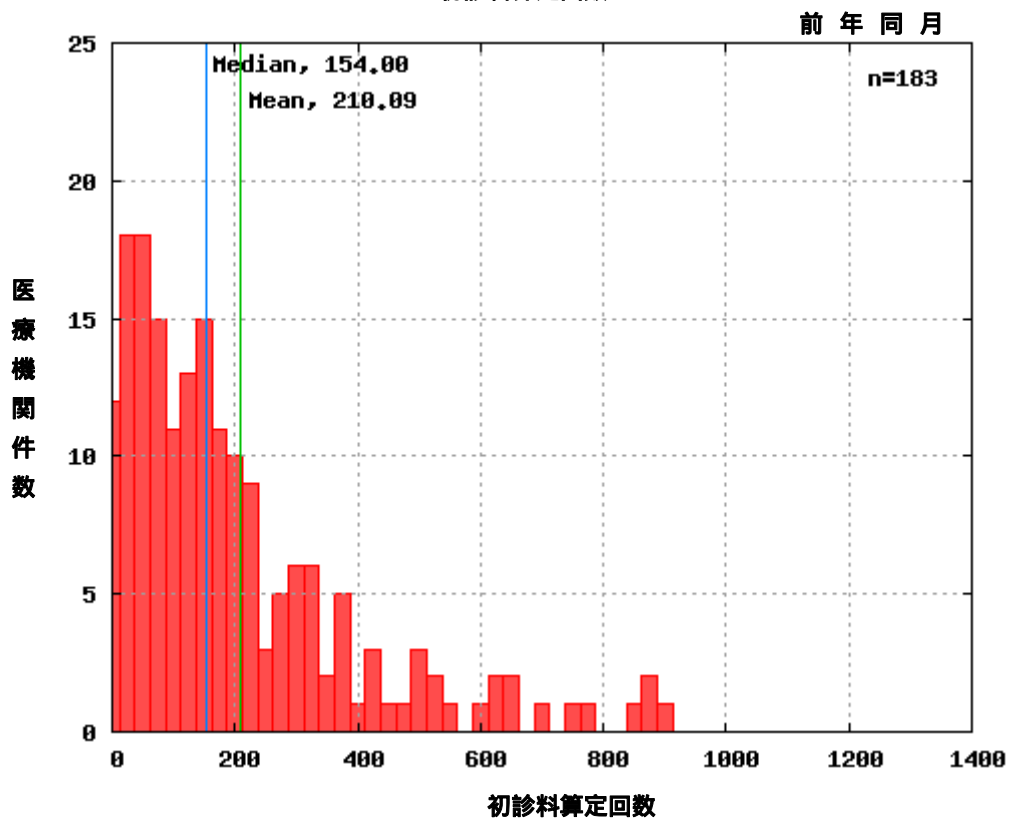
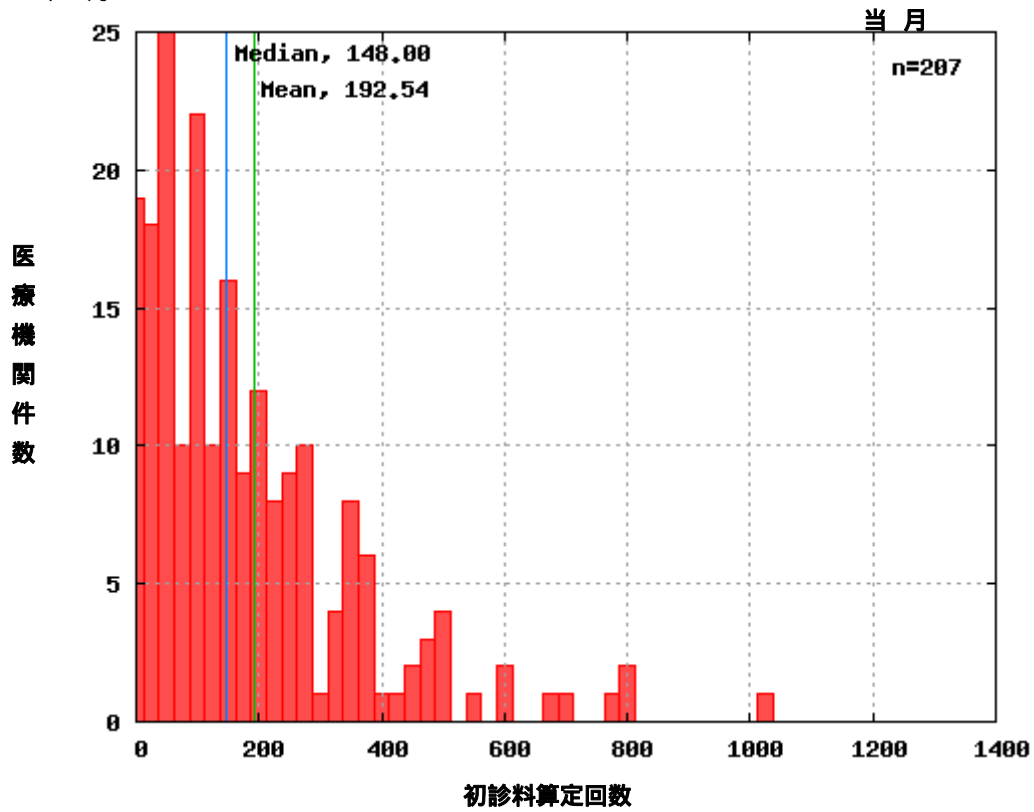
2.4. 初診料算定回数

(1) 2009年4月





(2) 2009年5月





(3) 2009年6月

